

MONTHLY MEMBERSHIP PROGRESS REPORT

District 14 D

Results as of: 11/30/2023

GMT:

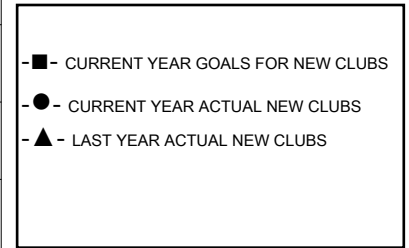
LOCATION PENNSYLVANIA

GMT CA

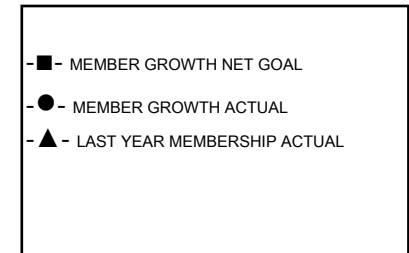
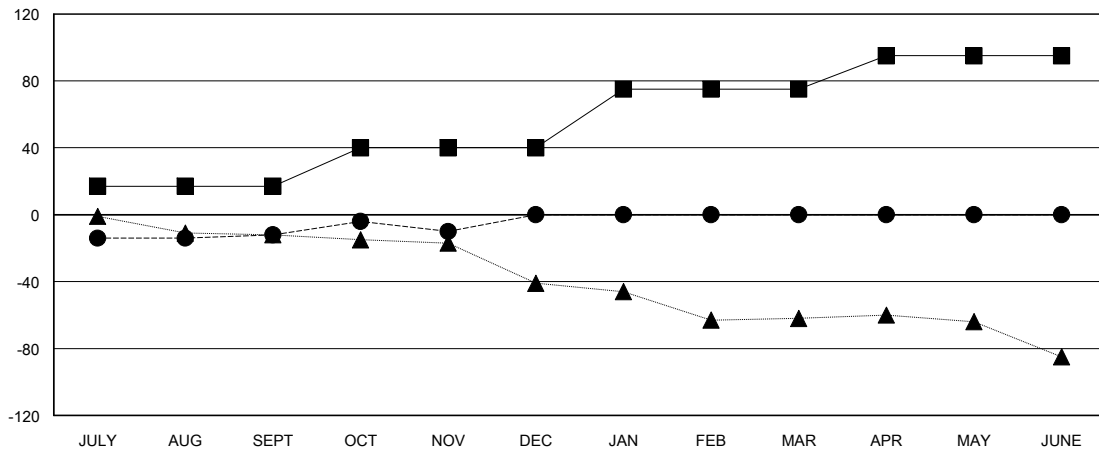
Clubs			
RESULTS FOR 2023-2024			
QUARTER	NEW CLUB GOAL	NEW CLUBS	DROPPED CLUBS
JULY/AUG/SEPT	0	0	0
OCT/NOV/DEC	1	0	0
JAN/FEB/MAR	0	0	0
APR/MAY/JUNE	0	0	0

Members			
RESULTS FOR 2023-2024			
QUARTER	MEMBER GROWTH NET GOAL	MEMBER GROWTH ACTUAL	DROPPED MEMBERS ACTUAL (including transfers)
JULY/AUG/SEPT	17	23	31
OCT/NOV/DEC	23	17	13
JAN/FEB/MAR	35	0	0
APR/MAY/JUNE	20	0	0

GOALS AND ACTUAL NEW CLUBS CUMULATIVE



GOALS AND ACTUAL MEMBERS CUMULATIVE



DROPPED CLUBS: 0	20 CLUBS OF 41 ADDED 1 OR MORE NEW MEMBERS	GENDER DISTRIBUTION MALE 900 (75.89%) FEMALE 286 (24.11%)
DROPPED MEMBERS DECEASED 9 CLUB CANCELLED 0 OTHER 35 TOTAL 44	CLICK HERE FOR CUMULATIVE MEMBERSHIP DATA	TOTAL FAMILY UNIT MEMBERS 212 FAMILY MEMBERS PAYING HALF DUES 110